

### ■ Features :

- Universal AC input / Full range
- Protections: Short circuit / Overload / Over voltage
- Cooling by free air convection
- LED indicator for power on
- 100% full load burn-in test
- All using 105°C long life electrolytic capacitors
- Withstand 300VAC surge input for 5 second
- High operating temperature up to 70°C
- Withstand 5G vibration test
- High efficiency, long life and high reliability
- 3 years warranty

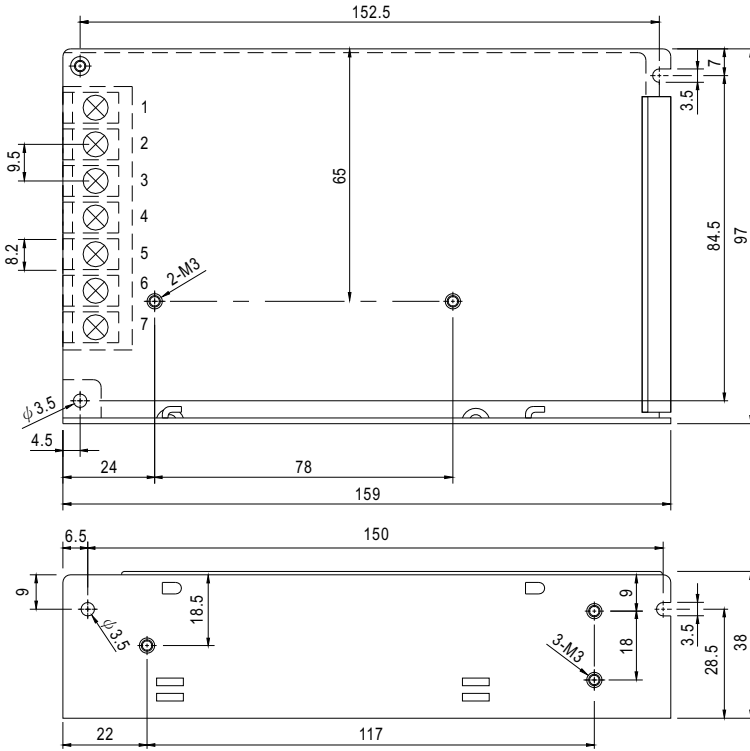


### SPECIFICATION

| MODEL                 | RS-100-3.3   | RS-100-5  | RS-100-12    | RS-100-15    | RS-100-24      | RS-100-48    |              |
|-----------------------|--|---|--------------|--------------|----------------|--------------|--------------|
| OUTPUT                | DC VOLTAGE   | 3.3V  | 5V           | 12V          | 15V            | 24V          | 48V          |
|                       | RATED CURRENT  | 20A   | 16A          | 8.5A         | 7A             | 4.5A         | 2.3A         |
|                       | CURRENT RANGE  | 0 ~ 20A   | 0 ~ 16A      | 0 ~ 8.5A     | 0 ~ 7A         | 0 ~ 4.5A     | 0 ~ 2.3A     |
|                       | RATED POWER  | 66W   | 80W          | 102W         | 105W           | 108W         | 110.4W       |
|                       | RIPPLE & NOISE (max.) Note.2   | 80mVp-p   | 80mVp-p      | 120mVp-p     | 120mVp-p       | 120mVp-p     | 200mVp-p     |
|                       | VOLTAGE ADJ. RANGE   | 3.2V ~ 3.5V   | 4.75 ~ 5.5V  | 11.4 ~ 13.2V | 14.25 ~ 16.5V  | 22.8 ~ 26.4V | 45.6 ~ 52.8V |
|                       | VOLTAGE TOLERANCE Note.3   | ±3.0%   | ±2.0%        | ±1.0%        | ±1.0%          | ±1.0%        | ±1.0%        |
|                       | LINE REGULATION Note.4   | ±0.5%   | ±0.5%        | ±0.5%        | ±0.5%          | ±0.5%        | ±0.5%        |
|                       | LOAD REGULATION Note.5   | ±2.0%   | ±1.0%        | ±0.5%        | ±0.5%          | ±0.5%        | ±0.5%        |
|                       | SETUP, RISE TIME   | 500ms, 20ms/230VAC    1200ms, 30ms/115VAC at full load  |              |              |                |              |              |
| HOLD UP TIME (Typ.)   | 95ms/230VAC    17ms/115VAC at full load  |   |              |              |                |              |              |
| INPUT                 | VOLTAGE RANGE  | 88 ~ 264VAC    125 ~ 373VDC (Withstand 300VAC surge for 5sec. Without damage)   |              |              |                |              |              |
|                       | FREQUENCY RANGE  | 47 ~ 63Hz   |              |              |                |              |              |
|                       | EFFICIENCY (Typ.)  | 74%   | 77%          | 81%          | 82%            | 84%          | 84%          |
|                       | AC CURRENT (Typ.)  | 2.5A/115VAC    1.5A/230VAC  |              |              |                |              |              |
|                       | INRUSH CURRENT (Typ.)  | COLD START 40A/230VAC   |              |              |                |              |              |
|                       | LEAKAGE CURRENT  | <2mA / 240VAC   |              |              |                |              |              |
| PROTECTION            | OVERLOAD   | 110 ~ 150% rated output power<br>Protection type : Hiccup mode, recovers automatically after fault condition is removed |              |              |                |              |              |
|                       | OVER VOLTAGE   | 3.8 ~ 4.45V   | 5.75 ~ 6.75V | 13.8 ~ 16.2V | 17.25 ~ 20.25V | 27.6 ~ 32.4V | 55.2 ~ 64.8V |
| ENVIRONMENT           | WORKING TEMP.  | -25 ~ +70°C (Refer to "Derating Curve")   |              |              |                |              |              |
|                       | WORKING HUMIDITY   | 20 ~ 90% RH non-condensing  |              |              |                |              |              |
|                       | STORAGE TEMP., HUMIDITY  | -40 ~ +85°C, 10 ~ 95% RH  |              |              |                |              |              |
|                       | TEMP. COEFFICIENT  | ±0.03%/°C (0 ~ 50°C)  |              |              |                |              |              |
|                       | VIBRATION  | 10 ~ 500Hz, 5G 10min./1cycle, period for 60min. each along X, Y, Z axes   |              |              |                |              |              |
| SAFETY & EMC (Note 6) | SAFETY STANDARDS   | UL62368-1, TUV EN62368-1, EAC TP TC 004 approved  |              |              |                |              |              |
|                       | WITHSTAND VOLTAGE  | I/P-O/P:3KVAC    I/P-FG:2KVAC    O/P-FG:0.5KVAC   |              |              |                |              |              |
|                       | ISOLATION RESISTANCE   | I/P-O/P, I/P-FG, O/P-FG:100M Ohms / 500VDC / 25°C / 70% RH  |              |              |                |              |              |
|                       | EMC EMISSION   | Compliance to EN55032 (CISPR32) Class B, EN61000-3-2,-3, EAC TP TC 020  |              |              |                |              |              |
|                       | EMC IMMUNITY   | Compliance to EN61000-4-2,3,4,5,6,8,11, EN61000-6-2 (EN50082-2), heavy industry level, criteria A, EAC TP TC 020        |              |              |                |              |              |
| OTHERS                | MTBF   | 260.8Khrs min.    MIL-HDBK-217F (25°C)  |              |              |                |              |              |
|                       | DIMENSION  | 159*97*38mm (L*W*H)   |              |              |                |              |              |
|                       | PACKING  | 0.6Kg; 24pcs/15.4Kg/0.7CUFT   |              |              |                |              |              |
| NOTE                  | <ol style="list-style-type: none"> <li>1. All parameters NOT specially mentioned are measured at 230VAC input, rated load and 25°C of ambient temperature.</li> <li>2. Ripple &amp; noise are measured at 20MHz of bandwidth by using a 12" twisted pair-wire terminated with a 0.1uf &amp; 47uf parallel capacitor.</li> <li>3. Tolerance : includes set up tolerance, line regulation and load regulation.</li> <li>4. Line regulation is measured from low line to high line at rated load.</li> <li>5. Load regulation is measured from 0% to 100% rated load.</li> <li>6. The power supply is considered a component which will be installed into a final equipment. The final equipment must be re-confirmed that it still meets EMC directives. For guidance on how to perform these EMC tests, please refer to "EMI testing of component power supplies." (as available on <a href="http://www.meanwell.com">http://www.meanwell.com</a>)</li> <li>7. Length of set up time is measured at cold first start. Turning ON/OFF the power supply very quickly may lead to increase of the set up time.</li> <li>8. The ambient temperature derating of 3.5°C/1000m with fanless models and of 5°C/1000m with fan models for operating altitude higher than 2000m(6500ft).</li> </ol> <p>⊗ Product Liability Disclaimer : For detailed information, please refer to <a href="https://www.meanwell.com/serviceDisclaimer.aspx">https://www.meanwell.com/serviceDisclaimer.aspx</a></p> |   |              |              |                |              |              |

**Mechanical Specification**

Case No. 901C Unit:mm

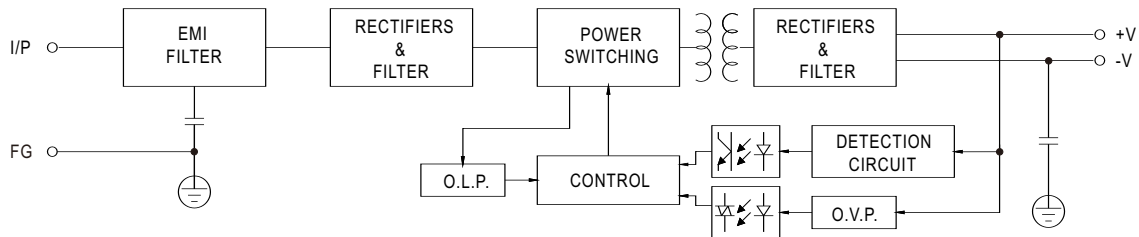


Terminal Pin No. Assignment

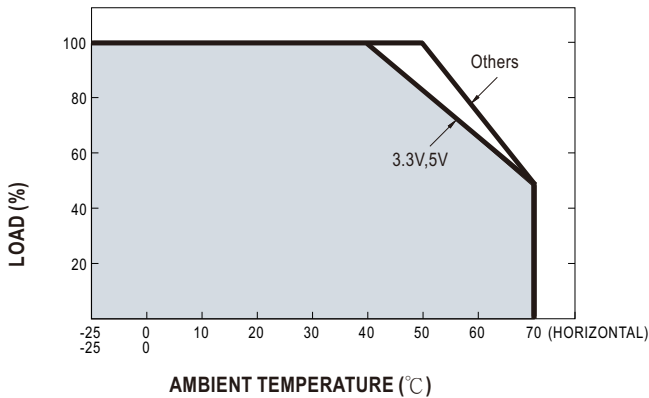
| Pin No. | Assignment | Pin No. | Assignment   |
|---------|------------|---------|--------------|
| 1       | AC/L       | 4,5     | DC OUTPUT -V |
| 2       | AC/N       | 6,7     | DC OUTPUT +V |
| 3       | FG $\perp$ |         |              |

**Block Diagram**

fosc : 60KHz



**Derating Curve**



**Static Characteristics**

