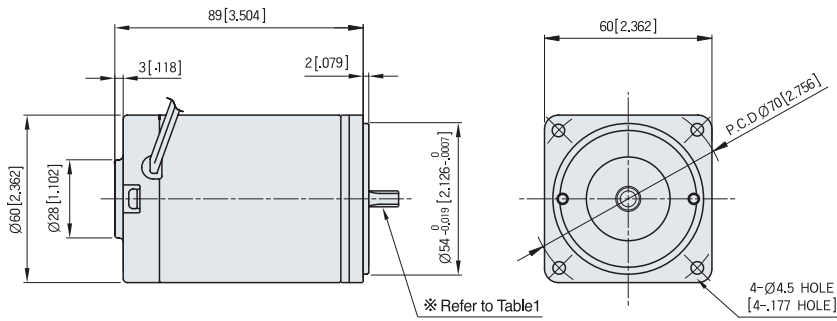




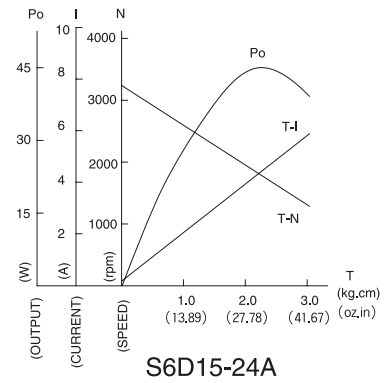
STANDARD TYPE S6D SERIES [15W]

MOTOR DIMENSION

UNIT : mm[inch]



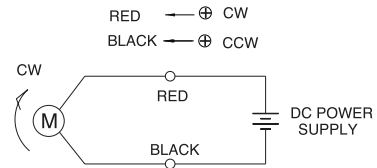
CHARACTERISTIC CURVE



SPEC for output shaft of motor-(Table 1)

MODEL	GEARED TYPE	STRAIGHT TYPE	D-CUT TYPE
	S6D15- A	S6D15- S	S6D15- D

CIRCUIT DIAGRAM



The direction of motor rotation is as viewed from the front shaft end of the motor

MOTOR SPECIFICATION

(Voltage : DC 24V)

Type	Voltage	Output	No Load		At Rated Load			Run Duty	Weight	
			Speed	Current(MAX.)	Speed	Torque	Current			
			RPM	A	RPM					A
S6D15-12□	12	15	3200	0.80	2950	0.049	N-m	2.00	2000	0.6
						6.9	oz-in			
						0.50	kgf cm			
S6D15-24□	24	15	3300	0.40	3000	0.049	N-m	1.00	2000	0.6
						6.9	oz-in			
						0.50	kgf cm			
S6D15-90□	90	15	3000	0.20	3000	0.049	N-m	0.30	2000	0.6
						6.9	oz-in			
						0.50	kgf cm			

* Run duty is valued at rated Voltage and No load

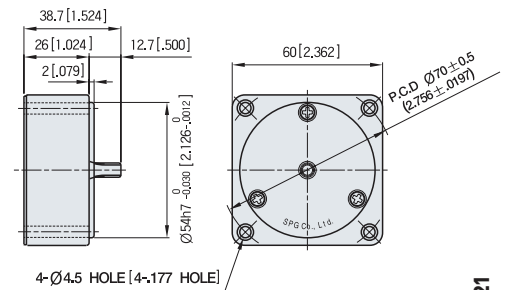
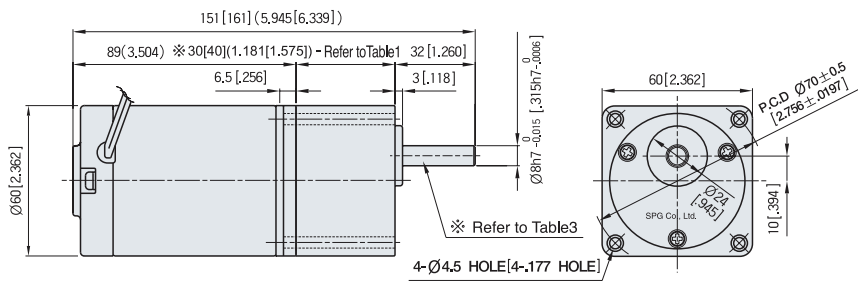
21C, for World geared motor!



GEARED MOTOR SPECIFICATION UNIT : mm[inch]

GEARED MOTOR ※ MOTOR MODEL : S6D15- A
 ※ HEAD MODEL : S6 A3 ~S6 A250

INTER-DECIMAL GEAR HEAD
 ※ MODEL : S6GX10B



30(40) – (Table1)

GEAR RATIO	SIZE:mm[inch]
S6 A3 ~ S6 A18	30 [1.181]
S6 A20 ~ S6 A250	40 [1.575]

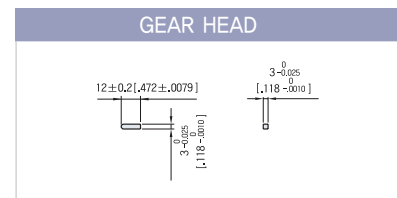
WEIGHT – (Table2)

PART	WEIGHT:kg[oz]	
MOTOR	0.9(31.7)	
DECIMAL GEAR HEAD	0.18(6.3)	
GEAR HEAD	S6 A3 ~ S6 A18	0.24(8.5)
	S6 A20 ~ S6 A40	0.30(10.6)
	S6 A50 ~ S6 A250	0.33(11.6)

SPEC for output shaft of gearhead–(Table3)

MODEL	SHAFT SPEC
STRAIGHT TYPE S6SA3 ~ S6SA250	
D-CUT TYPE S6DA3 ~ S6DA250	
KEY TYPE S6KA3 ~ S6KA250	

KEY SPEC



GEAR HEAD RATED LOAD

S6D15-24A

MODEL	GEAR RATIO	3	3.6	5	6	7.5	9	10	12.5	15	18	20	25	30	36	40	50	60	75	90	100	120	150	180	200	250
S6DA B	No Load rpm	1100	917	660	550	440	367	330	264	220	183	165	132	110	92	83	66	55	44	37	33	28	22	18	17	13
	N-m	0.12	0.14	0.20	0.24	0.30	0.36	0.40	0.50	0.60	0.71	0.71	0.89	1.07	1.29	1.43	1.61	1.93	2.41	2.89	2.94	2.94	2.94	2.94	2.94	2.94
	oz-in	16.9	20.2	28.1	33.7	42.2	50.6	56.2	70.3	84.3	101.2	101.2	126.5	151.7	182.1	202.3	227.6	273.1	341.4	409.7	416.3	416.3	416.3	416.3	416.3	416.3
	kgf·cm	1.2	1.5	2.0	2.4	3.0	3.6	4.1	5.1	6.1	7.3	7.3	9.1	10.9	13.1	14.6	16.4	19.7	24.6	29.5	30.0	30.0	30.0	30.0	30.0	30.0

- The code in of gearhead model is for gear ratio
- It is the permissible torque of the assembled motor and gearhead
 The permissible torque of the combination of the regular gearhead and the inter-decimal gearhead is 30 f .
- color indicates that the output shaft of the geared motor rotates in the same direction as the output shaft of the motor.
 Others indicate rotation in the opposite direction.
- No Load rpm equals Motor no load rpm divided by gear ratio. The actual rotation speed is less 2-20% than the displayed value according to the load
- There is no marked the L code for it is an exclusive use.