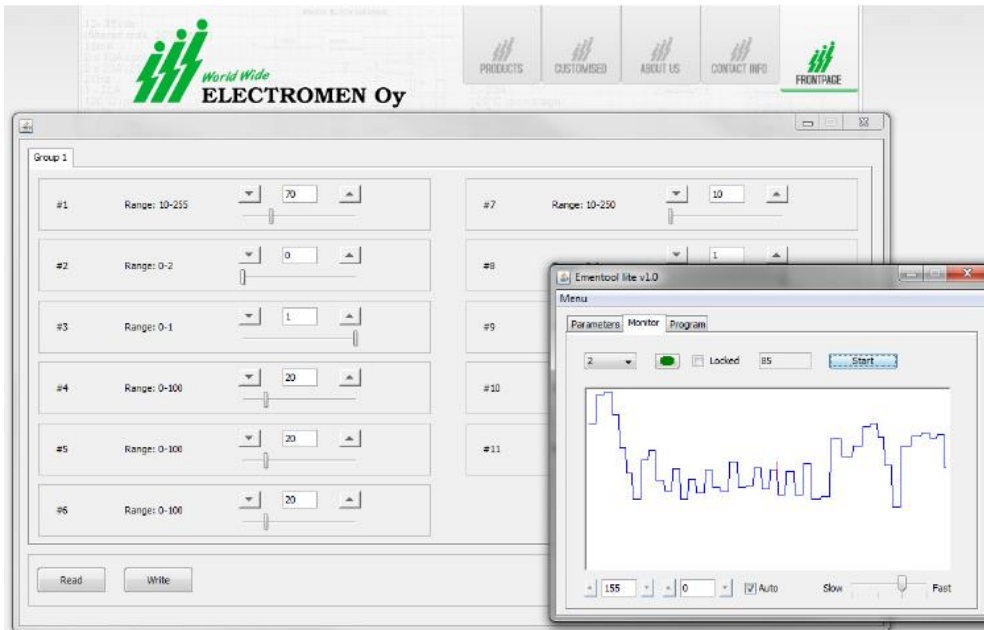


## User interface for Electromen products.

### Manual EMENTOOL LITE



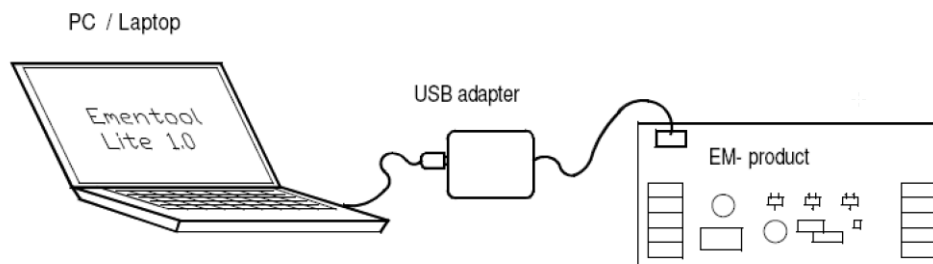
- ✓ Parameter setting
- ✓ Monitoring
- ✓ Program update

The **Ementool Lite** program can be used to set Electromen products and for program updates. The program has three main views: setting of the parameters, monitoring, and program update. The target device is then plugged to a computer normally by using a EM-328 USB adapter.

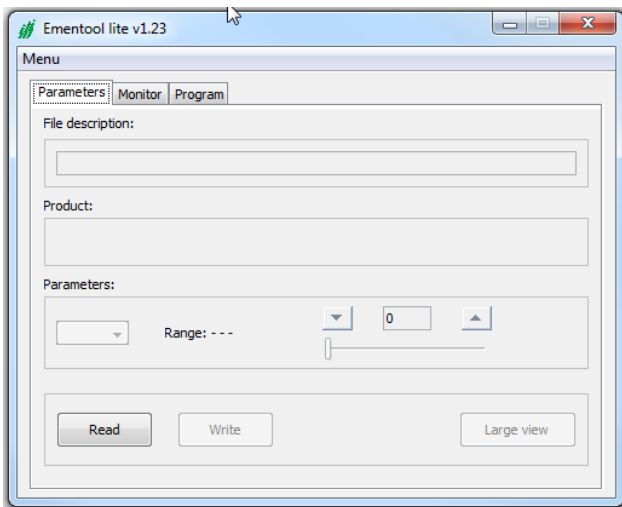
#### Installation:

In order for the program to work, the computer must have a Java software installed which is already installed on most windows computers. If necessary it can be downloaded and installed freely from [www.java.com](http://www.java.com).

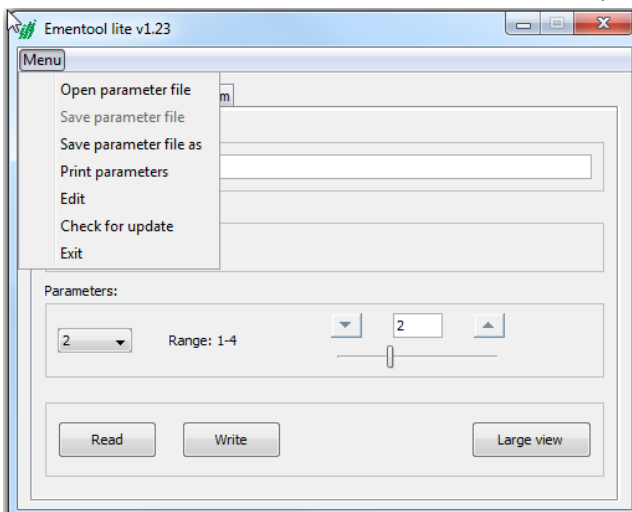
1. Plug EM-328 adapter to the computer
2. Download the Ementool lite program: <http://www.electromen.com/EmentoolLite/EmentoolLiteInstall.jar>  
 Also available on our website: <https://www.zilvertron.com/downloads/>
3. Open / Run EmentoolLiteInstall\_vX.XX.jar and install according to program's instructions.



Plug EM-328 USB-adapter to the computer and connect the adapter's red connector to the target device's red connector. Start the program with an icon on the desktop and the view below should appear to the screen:



1. Select **Read**; parameters are read from the target device and the connected device's tag will appear on the "Product" field.
2. **File description** here you can add a file / project name.
3. With the pull down button **Parameters** all parameters can be selected and adjusted. This is also possible with the option **Large view**.
4. The button **Large view** will open a second window. This window contains different **Group** tabs for / in case of more parameters.
5. Select **Write** to save the changed settings to the controllers.
6. Parameter can be saved via the **Menu** button (location: left in the window), see below:

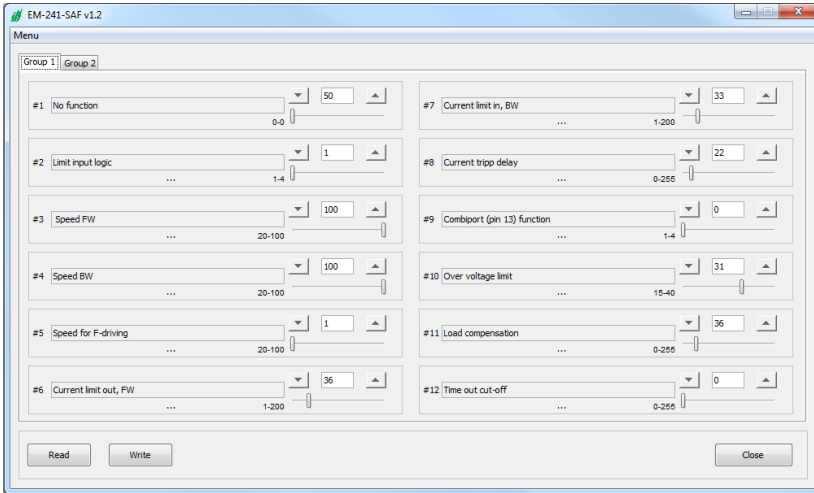


With this function you can easily save different parameters setting for different projects, when applicable.

On the next page a full description of the **Large view** button.

**Large view:**

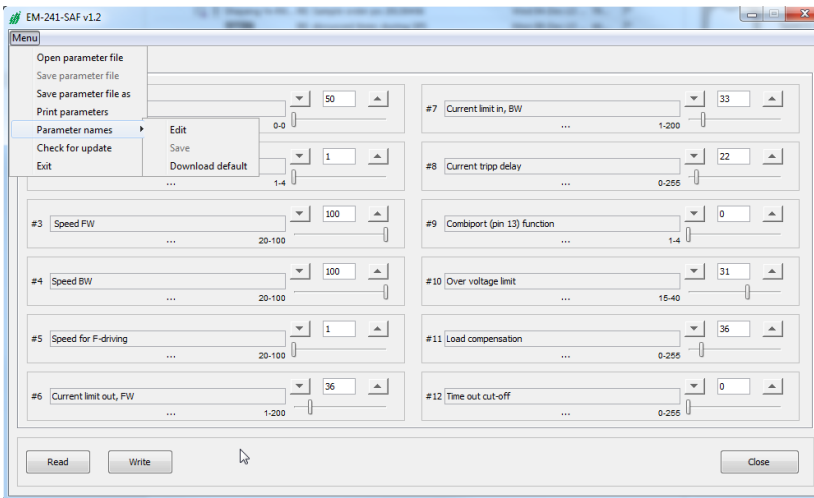
The button **Large view** will open a second window. This window contains different **Group** tabs for / in case of more parameters.



Please select **Write** after changing the parameters, to save this values to the controller. Select **Close** to return to the home screen.

**Note!** Only after the command **Write** the parameters will be saved to the controller.

It is possible to customize the Parameter name via the **Menu** button, see below:



When you have any questions, please do not hesitate to contact us!

Phone: +31 (0)182- 305045 or via E-mail: [info@zilvertron.com](mailto:info@zilvertron.com)

**Note:** The screen shots in this manual are only as indication. The actual, for example Parameter names, can be different per controller type.