

CANopen « Starter Kit »



Contents

1.	Bill of Materials.....	3
1.1.	“USB to CAN” converter.....	3
1.2.	Cables	3
1.3.	CAN accessories.....	3
1.4.	Software and USB accessories.....	3
2.	Driver installation	4
3.	HMI “DCmind Soft+CANopen” installation.....	8
4.	Motor connection	7
5.	Power cable datasheet	10
6.	I/O cable datasheet.....	11

1. BILL OF MATERIALS

1.1. "USB to CAN" converter



Reference: PEAK System IPEH-002021

In order to use this converter, the computer needs to install the corresponding drivers.

1.2. Cables



- CAN communication cable : M12 5 contacts male to M12 5 contacts female, 3m, shielded
- Power cable : M16 3 contacts, 3m, shielded
- I/O cable : M16 18 contacts, 3m, shielded

1.3. CAN accessories



- D-SUB bus connector
- T (F – M/F) connector
- 2 x Bus terminating resistors (120Ω) : M12 5 contacts (female & male)

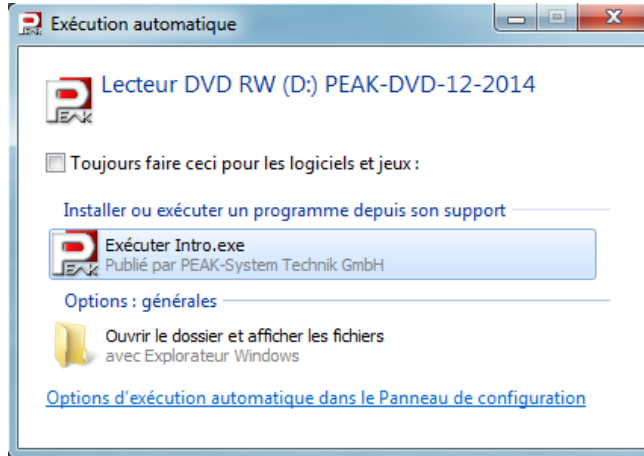
1.4. Software and USB accessories



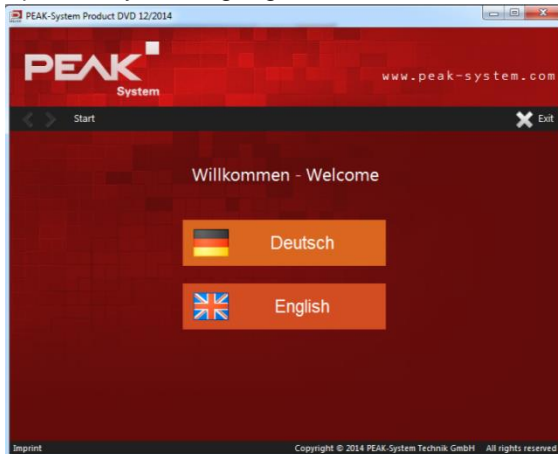
- USB to μUSB cable
- USB stick (including HMI setup, user manuals, configuration files etc...)

2. DRIVER INSTALLATION

Insert the driver installation disc. The following window should appear. Select the “.exe” option.



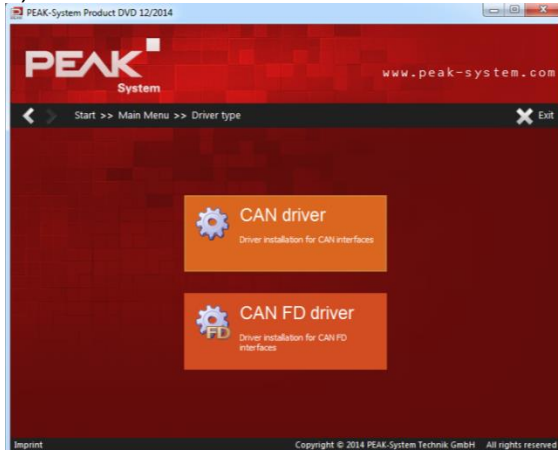
1) Select your language



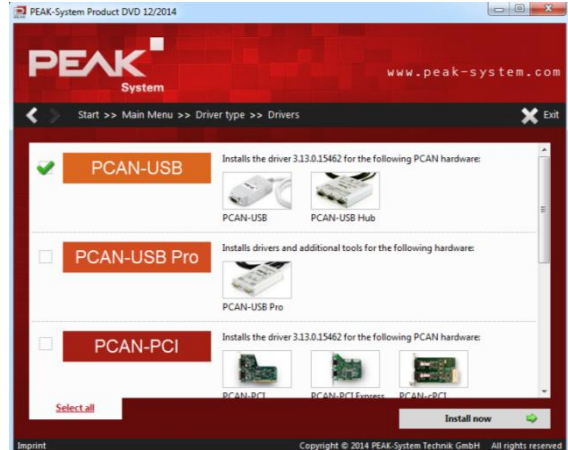
2) Click on “Drivers”



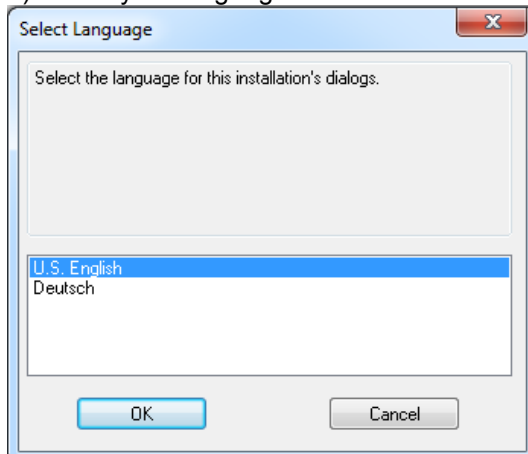
3) Click on “CAN driver”



4) Select “PCAN-USB”
5) Click on “Install now”



6) Select your language and click on "OK"

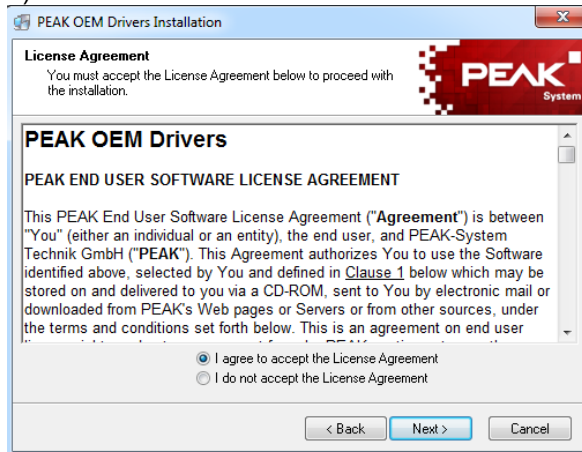


7) Click on "Next"

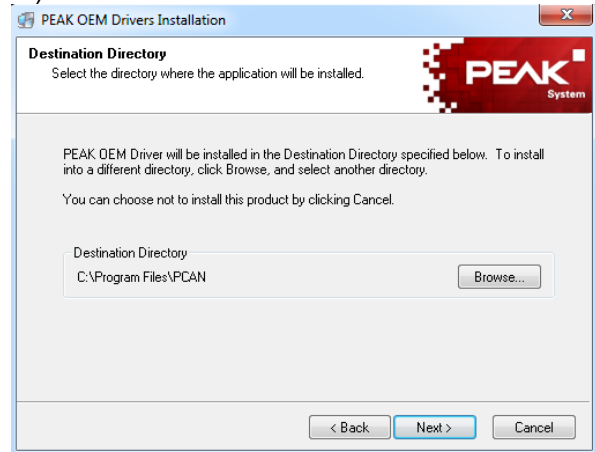


8) Select "I agree to accept the Licence Agreement"

9) Click on "Next"



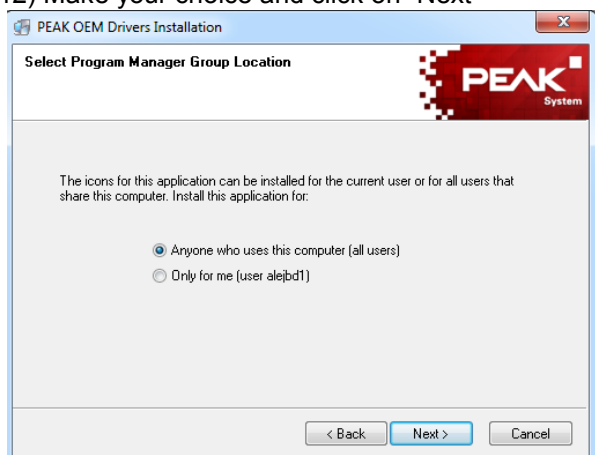
10) Click on "Next"



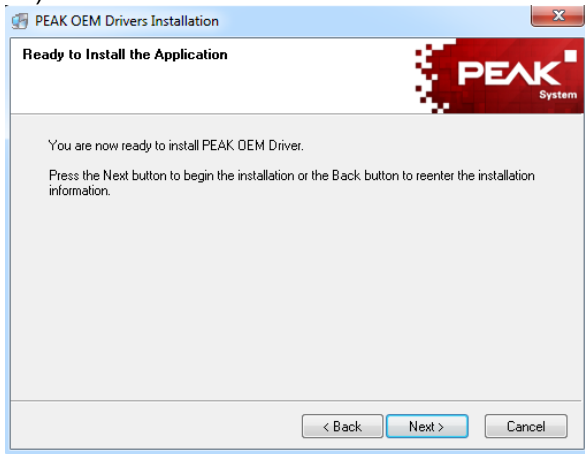
11) Click on "Next"



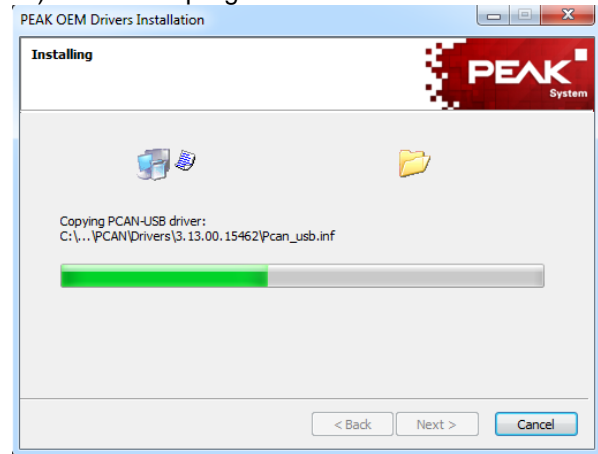
12) Make your choice and click on "Next"



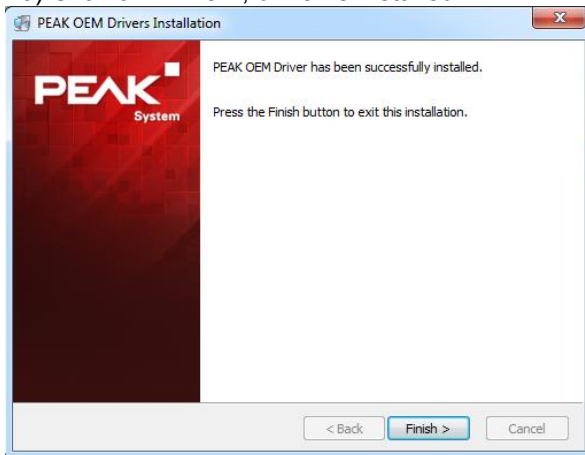
13) Click on "Next"



14) Install is in progress



15) Click on "Finish", driver is installed

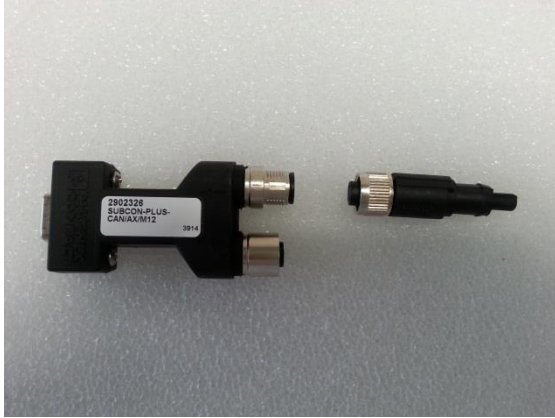


Note that is necessary to install drivers before connecting the motor.

3. MOTOR CONNECTION

The driver must be installed before connecting the motor.
The motor must be connected when the power supply is switched off.

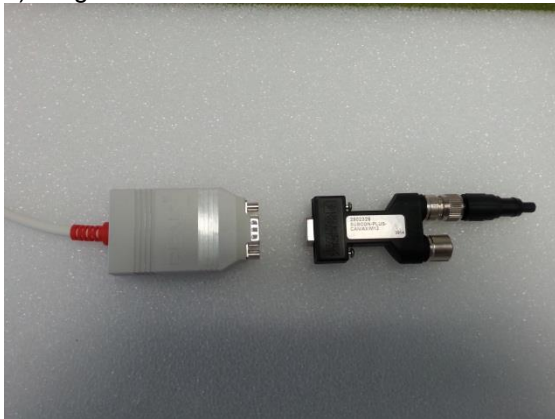
1) Plug the M12 resistor with the D-SUB connector



2) Plug the CAN converter with the PC



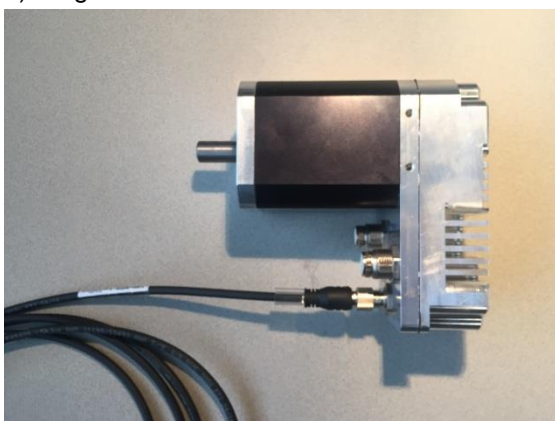
3) Plug the CAN converter with the D-SUB connector



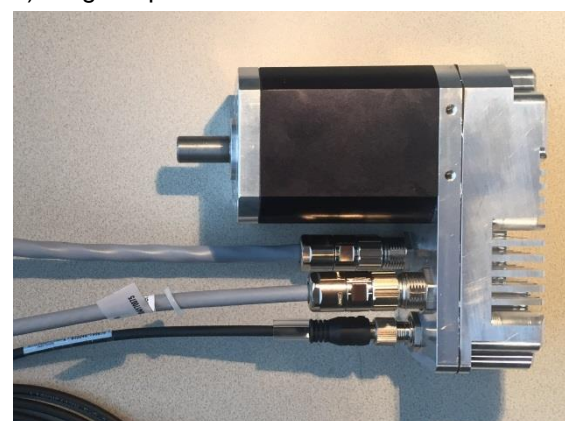
4) Plug the D-SUB connector with the CAN cable



5) Plug the CAN cable with the motor



6) Plug the power & I/O cables with the motor

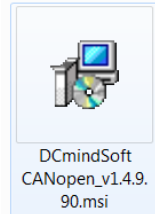


4. HMI “DCMIND SOFT+CANOPEN” INSTALLATION

The HMI setup is on the USB key, in the following folder:

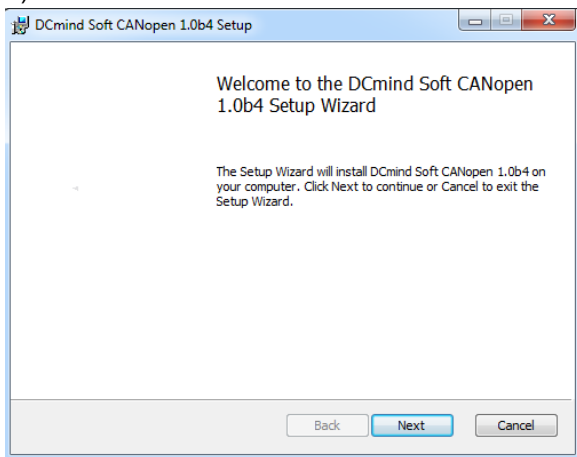
HMI Setup \ **DCmindSoft+CANopen_v1.4.9.90.msi**

Click on the following icon:

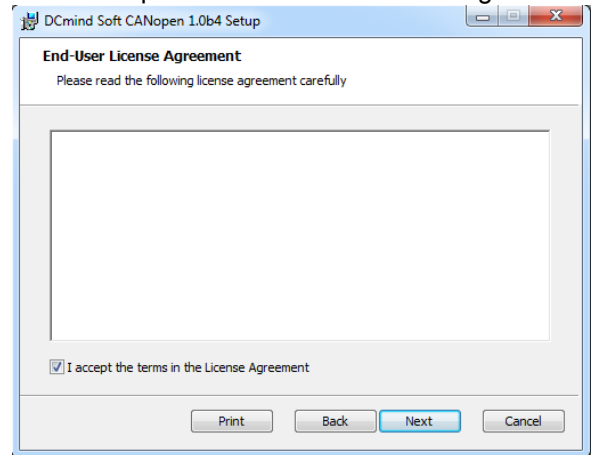


The following windows should appear:

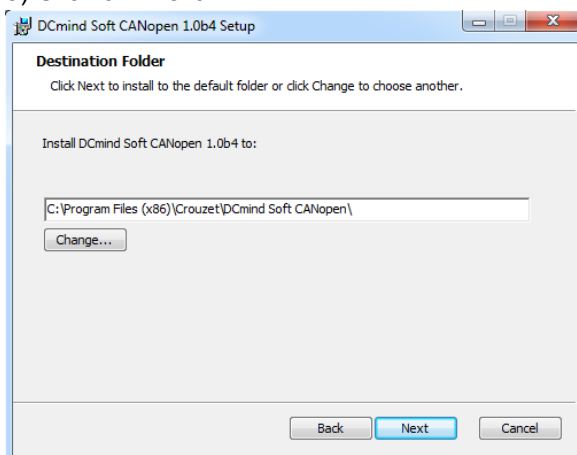
1) Click on “Next”



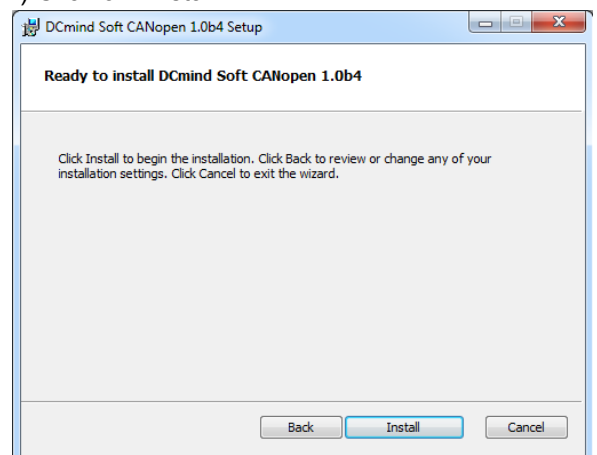
2) Click on “I accept the terms in the License Agreement”



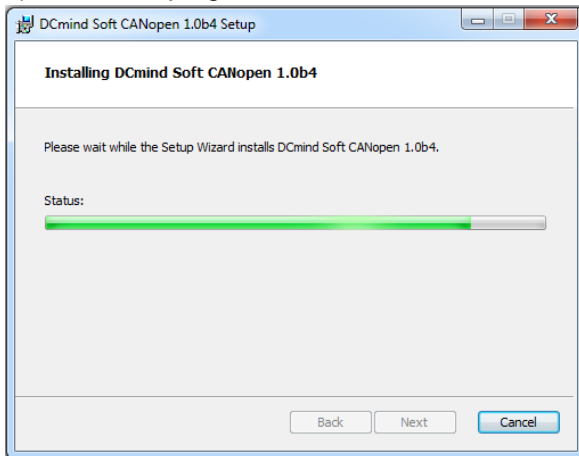
3) Click on “Next”



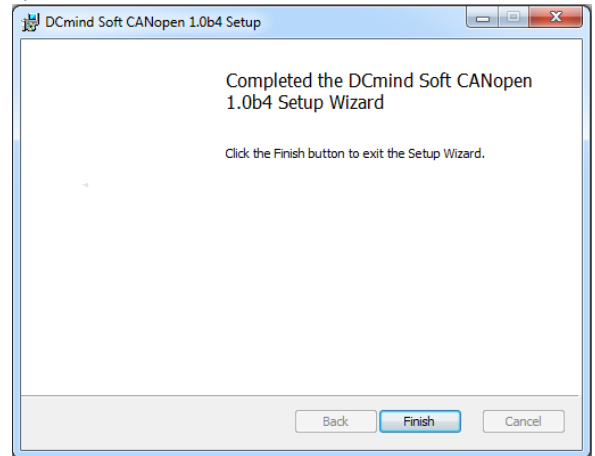
4) Click on “Install”



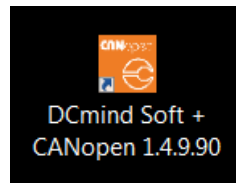
5) Install is in progress



6) Click on "Finish", HMI is installed

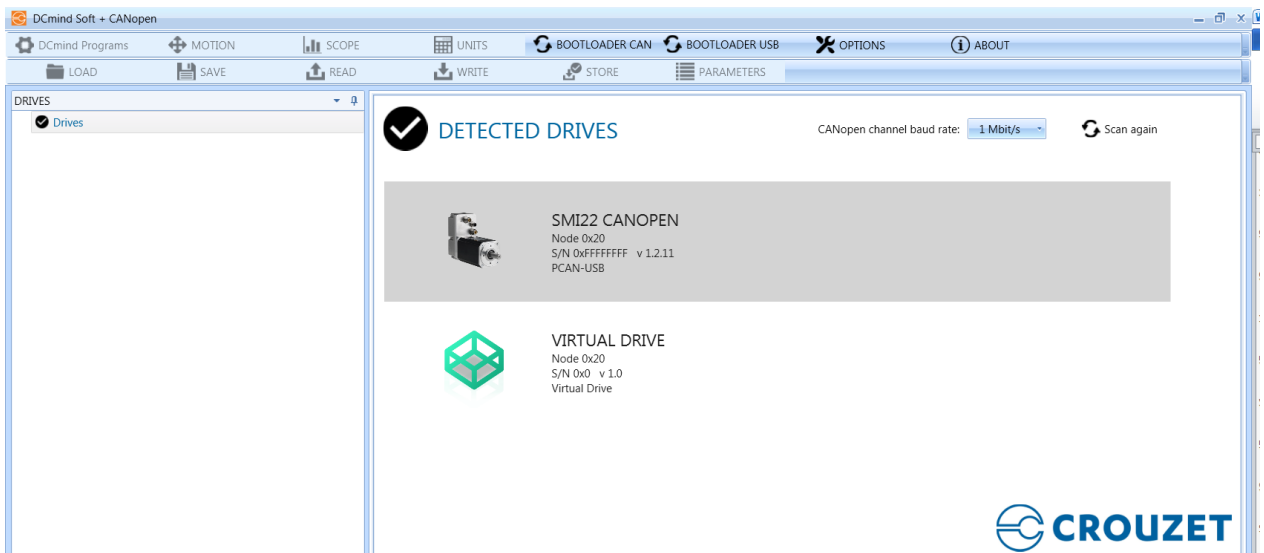


To launch the HMI "DCmind Soft+CANopen", click on the following icon:

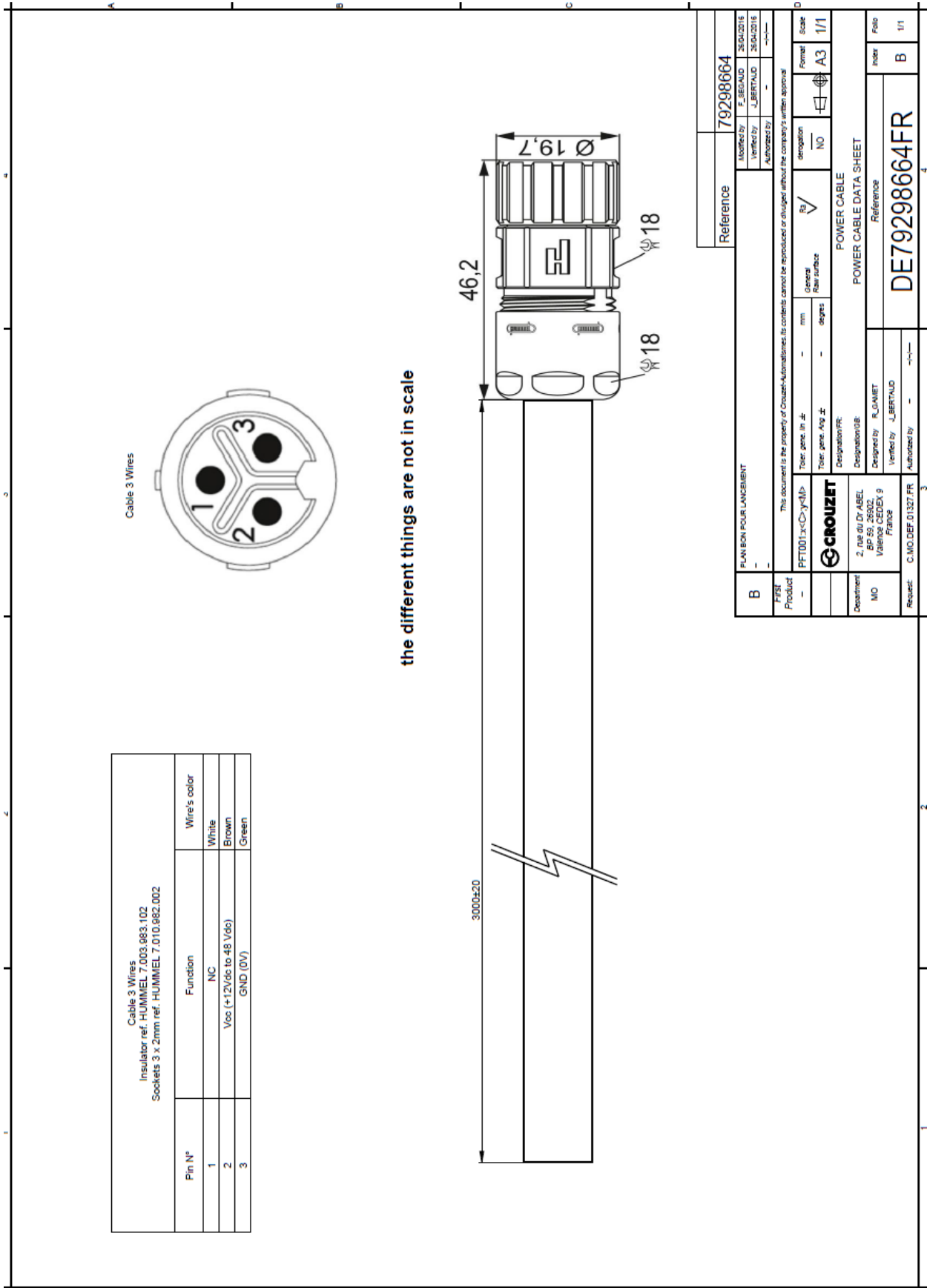


Note that at the first connection with the motor, it's necessary to load the XDD file on the HMI:

- Click on the grey part when the motor is detected on the network
- Select the XDD file present on the USB key, in the folder which correspond with your motor :



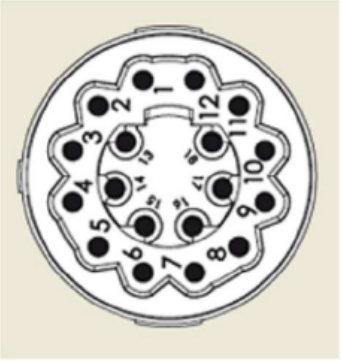
5. POWER CABLE DATASHEET



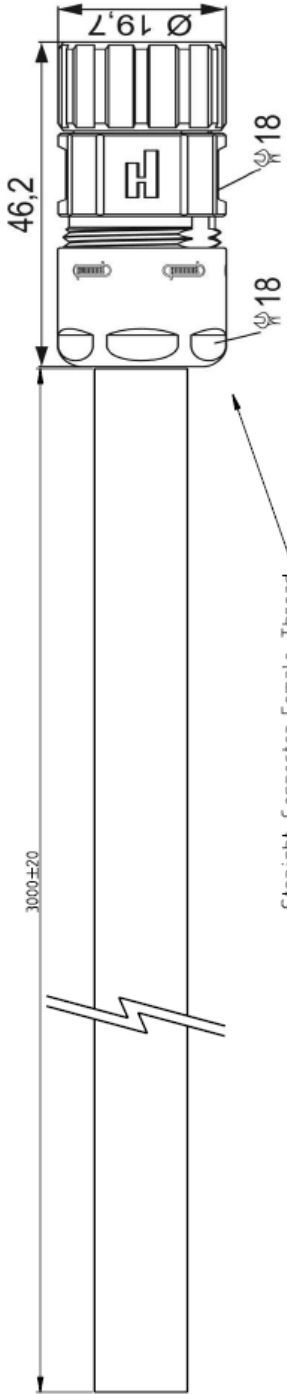
6. I/O CABLE DATASHEET

Cable 18 Wires

Pin N°	Function	Wire's color	Couleur des fils
1	VLOGIC	White	Blanc
2	GND_D	Brown	Brun
3	AN_1	Green	Vert
4	AN_2	Yellow	Jaune
5	INPUT_1	Grey	Gris
6	INPUT_2	Pink	Rose
7	INPUT_3	Blue	Bleu
8	INPUT_4	Red	Rouge
9	GND_D	Black	Noir
10	OUTPUT_1	Purple	Violet
11	OUTPUT_2	Grey / Pink	Gris / Rose
12	OUTPUT_3	Red / Blue	Rouge / Bleu
13	OUTPUT_4	White / Green	Blanc / Vert
14	GND_D	Brown / Green	Brun / Vert
15	STO 2-	White / Yellow	Blanc / Jaune
16	STO 2+	Brown / Yellow	Brun / Jaune
17	STO 1-	White / Grey	Blanc / Gris
18	STO 1+	Brown / Grey	Brun / Gris



the different things are not in scale



3000±20

46,2

19,7

18

18

Straight Connector, Female Thread
7.810.500.000 cable Ø8-11 mm

CREATION DE L'OBJET	Reference	79513106	Modified by	B.LAZARI	26/03/2018
Produit			Verified by	C.PAGOLA	26/03/2018
			Authorized by		
Description		Toler. gene. in ±		mm	
		Toler. gene. Ang ±		degrees	
		Designation		NO	
		General flow surface		A3	
		Scale		V1	
Department		I/O CABLE M16 (18PTS)			
MO		I / O CABLE DATA SHEET			
Designed by		B.LAZARI		26/03/2018	
Verified by		C.PAGOLA		26/03/2018	
Authorized by					
Request:		Reference		index	
		DE79513106FR		A	
				1/1	